



A few ideas for wet weather visits



The immediate coastal strip can often enjoy much better weather than the nearby Lake District. It is rarely as cold in the winter (snow doesn't often settle in Whitehaven and when

it does it doesn't stick!).

However, we can suffer wet periods from a few minutes to a few days and extended rainy periods are not the best times to visit the beaches or walk on the fells.

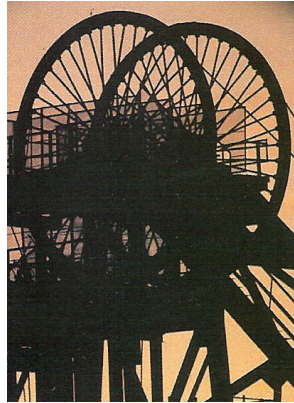
retail therapy although the area does not lend itself to specialise here.

Many of these locations can be visited by public transport and remember that we can provide suggestions for some really good car tours.

We have given some thought to ideas of places that offer under-cover facilities or are provided indoors.

Many of these ideas are duplicated on other recommendations as we believe that they are worth a visit whether the weather is fair or foul.

We have also included a few ideas for a bit of



Whatever the weather

One of the best attractions is the, unimaginatively named, Rum Story. You will be transported from our Georgian town centre to an exotic island in the Caribbean. Plenty of interest and humour. Give yourselves half a day here.

Probably our favourite local attraction is the lovely Ravenglass and Eskdale narrow gauge railway that can be reached by car, rail or bus. Covered carriages are provided and the facilities at Dalegarth

are excellent. We can even offer vouchers for a free hot drink at the Fellbites restaurant.

The Coast Aquarium at Maryport has been described by several of our guests as the best that they have been to. Also at Maryport the Senhouse Roman museum offers a great insight into the Roman occupation of Cumbria and forms a significant part of the Hadrian's Wall World Heritage Site.

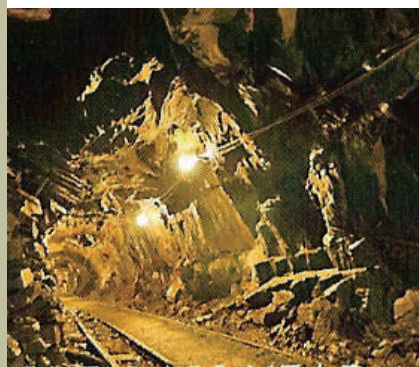
Back in Whitehaven the Haig Colliery mining museum is situated within the former site of Haig Pit, on the cliffs high above Whitehaven. The museum has something for all ages, suitable for educational, group visits and corporate visits.

On the high mountain pass between Borrowdale and Buttermere is Honister Slate Mine.

Here you can explore the awesome caverns hacked out by Victorian miners and tours are provided for all tastes—some are not for the faint hearted.

With interactive exhibits, exciting science workshops and plenty of hands-on fun, Sellafield Visitor Centre is the educational and entertaining centre for budding scientists of all ages.

Indoor shopping is available in the new mall at Workington and at Dunmail Park which also provides good cinema facilities.



- *The Rum Story*
- *Ravenglass and Eskdale railway*
- *The Lake District coast aquarium*
- *Senhouse Roman museum*
- *Haig Mining Museum*
- *Honister Slate Mine*
- *Sellafield Visitor Centre*
- *Recommended motoring tours*

Wet in West Cumbria?

WHAT CAN YOU DO WHEN IT'S RAINING